

Sergei Rachmaninoff
Symphony No. 1 in D Minor, Op. 13

I
Flauto III

Grave $\text{♩} = 40-42$

fff

rit Allegro ma non troppo $\text{♩} = 120$ 15 1 rit.

p

a tempo 2 1 20 2 1 rit. 1 a tempo 2 rit. 1 a tempo 1

Fl. *p cresc. poco a poco*

p *f*

Piu vivo $\text{♩} = 126$

ff *fff*

dim. 3 12

rit. 3 Moderato! 1 *fl.* 2

2 1 rit. Meno mosso 2 rit. Moderato 6 rit. 1 a tempo 1

Allegro vivace 9

1

2 5

1

8. 1

8 6 scherzando

cambia in Picc. 7 7 8 8 Picc.

Maes --

- 3 -

-to so

Allegro vivace

[senza rit.] *cambia in F! III.*

Moderato

13 11 12 8 rit. 4 2 3

Rachmaninoff — Symphony No. 1

-4-

2 3 rit. 1 Meno mosso 2 13 2 1 rit. 1 Moderato 5

Allegro molto

ff

Più vivo 4 14 8 15 3 1 3 1

Allegro vivace

accelerando

ff

cresc.

fff

II

Allegro animato 19 18 16 19 15 20 18 21 14 22 24 23 25 24 15 25 12

Meno mosso 27 21

Viol. p

Viol. II

-5-

III

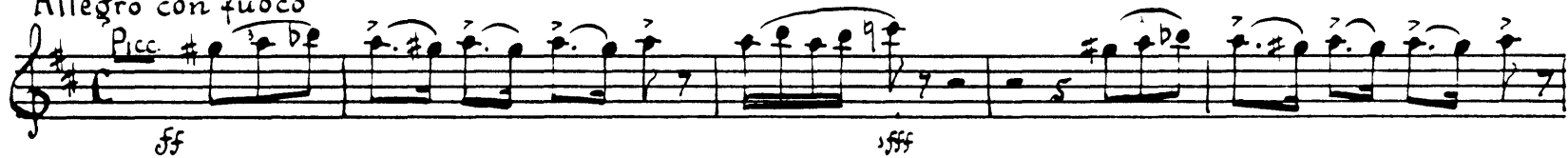
Tacet

Rachmaninoff — Symphony No. 1

-b-

IV

Allegro con fuoco



-7-

Musical score for the first movement of the Concerto for Piano and Orchestra, Op. 10, No. 1, by Franz Liszt. The score is in G major and 2/4 time. It features a piano solo in the right hand and a full orchestral accompaniment in the left hand. The score is divided into measures, with measure numbers 1 through 58 indicated. The tempo markings include "Allegro mosso", "Più vivo", "Con moto", "Meno mosso. Commodo", "Allegro con fuoco", and "a tempo". The score ends with a double bar line and a repeat sign.

Rachmaninoff — Symphony No. 1

-8-



Presto

